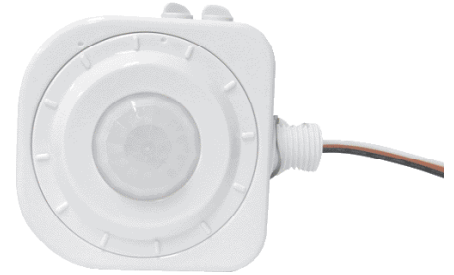
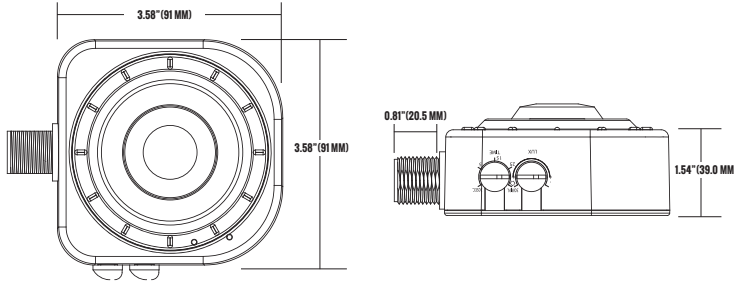


**PRODUCT CODE: SENPIR-HB-01**
**LINE VOLTAGE PIR OCCUPANCY SENSOR**


## PRODUCT DESCRIPTION

The Etlin-Daniels SENPIR-HB-01-OB Line Voltage PIR Occupancy Sensor with optional Long Bracket and the SENPIR-HB-01-OB2 with optional Short Bracket features passive Infrared (PIR) Sensing Technology. It's line voltage sensor with 360 degree lens offer amazing performance and sensitivity to small movements and are ideal for new or retrofit applications. Compatible with electronic and magnetic ballasts. Ideal applications consist of Lighting ON/OFF Control for Halogen, Fluorescent and LED light sources. Ideal for High Bay fixtures in warehouses, manufacturing facilities and retail box stores. The units are UL and cUL approved and comply with California Title 24 requirements.

- Relay circuitry - zero crossing to provide long reliable life.

## FEATURES

- Occupancy and motion detection using Passive Infrared Technology inside
- 360 Degree wide range and aisle way coverage
- Interchangeable lenses. Other pattern lenses are available
- Up to 35 foot mounting height
- Relay Imbedded (No External Box is Required)
- No minimum load requirement
- Adjustable Time Delay, from about 30 seconds to 25 minutes
- LED Activity Indication blinks when sensor detects motion
- Self contained using standard 1/2" knockouts
- White high impact injected molded plastic
- 5 Year limited warranty

## PRODUCT SPECIFICATIONS

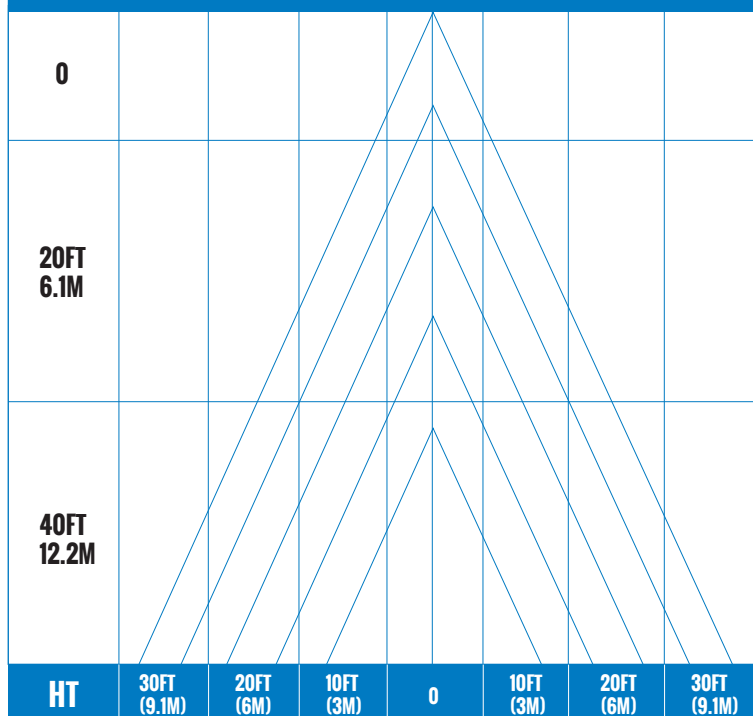
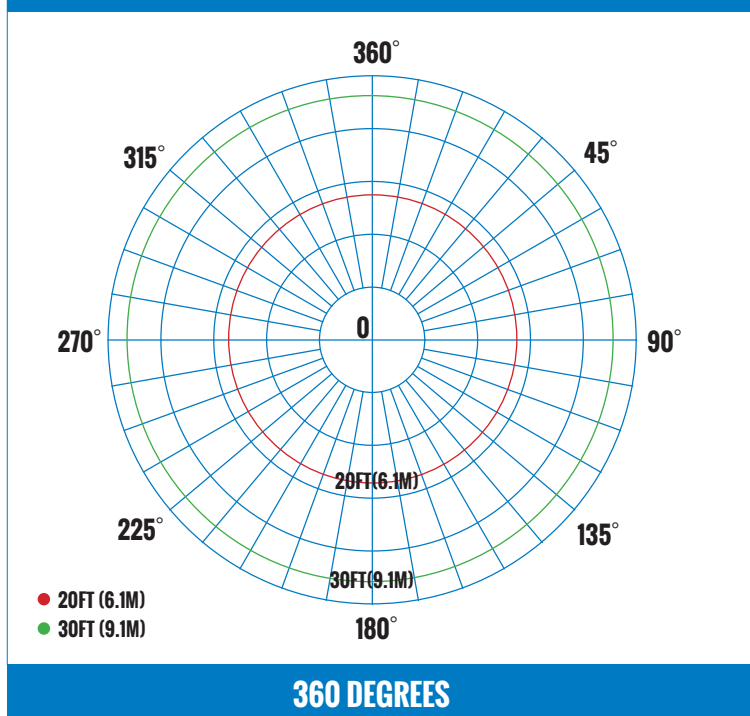
INPUT VOLTAGE	LOAD REQUIREMENT	LOAD HORSEPOWER	POWER FREQUENCY	TIME DELAY ADJUSTMENT	OPERATING TEMP
AC120V~277V~347V	800VA~120VAC 1200VA~277VAC 1500VA~347VAC	1/4 HP-120V	50-60HZ	FIXED 30 SECONDS~ 25 MINUTES	-10°C - +70°C 14°F - +160°F
OPERATION HUMIDITY RANGE	COVERAGE RANGE	CERTIFICATIONS	POWER CONSUMPTION	MOUNTING	PRODUCT DIMENSIONS
20-85% RH	UP TO 35 FT MOUNTING/ 360 DEGREES	UL c UL CAL T24 2005	2W-120V / 1W-277V	CEILING MOUNT/ HIGH BAY MOUNTING	3.58 X 1.54 X 3.58 INCHES (91 X 39 X 91 MM)

### OPTIONAL LENS

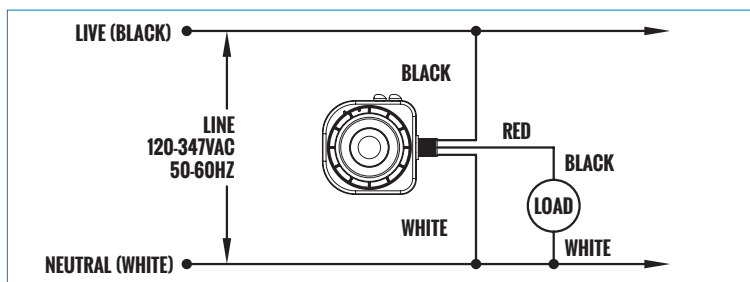
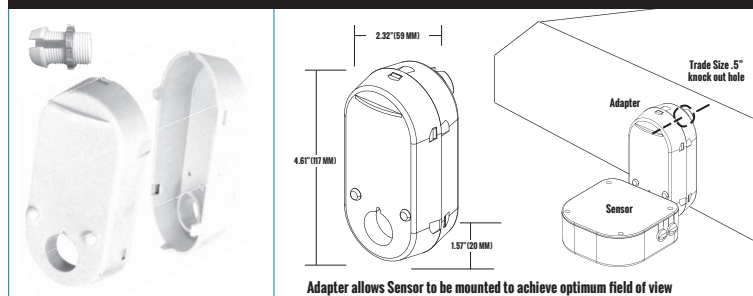
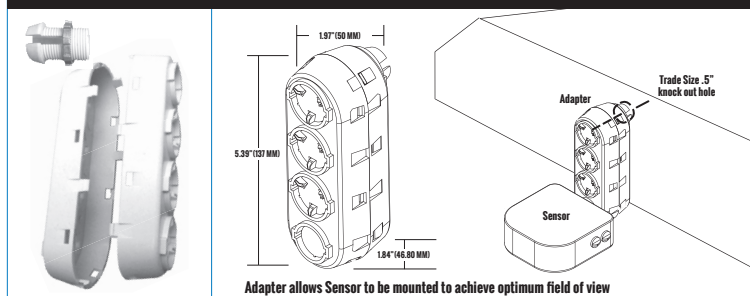
UNITS ARE SHIPPED WITH TWO LENSES - 360° HIGH BAY & AISLE PATTERN - ALSO AVAILABLE IS THE OPTIONAL LOW BAY LENSE. (CONSULT WITH ETLIN-DANIELS).


**WHITE - 360° HIGH BAY**

**BLACK - AISLE PATTERN**

**PRODUCT CODE: SENPIR-HB-01**
**LINE VOLTAGE PIR OCCUPANCY SENSOR**
**SENSOR PHOTOMETRIC - HIGHBAY 360 DEGREE FIELD OF VIEW (TEST REPORT)**
**SENSOR COVERAGE AREA (TEST REPORT)**

**RADIAL COVERAGE AREA (TEST REPORT)**

**WIRING DIAGRAM: WARNING:**

Disconnect power to Sensor by turning off the Circuit Breaker or removing the fuse from the Circuit before installing the SENPIR-HB-01-OB & SENIR-HB-01-OB2


**SINGLE POSITION OFFSET, SHORT BRACKET/SENIR-HB-01-OB2/OPTIONAL**

**MULTI POSITION LONG OFFSET BRACKET/SENIR-HB-01-OB/OPTIONAL**


Head Office - 1850 Wilson Ave. · Toronto, ON · M9M 1A1 · Tel: 416.741.7336 · Fax: 416.741.9104

Toll Free: in Canada. 1.800.661.9610 · in USA. 1.888.762.5384 (SOCKETS4U)

www.etlin-daniels.com · For sales/service questions · sales@etlin.com